

Made in
Japan

Roll &
Rigid

2

0% VOC
LED UV
inks

VA



Dual Head LED UV Printer for Flex & Rigid Media

The ValueJet VJ-1638UH is Mutoh's first ever dual head LED UV printer delivering increased print & cure performance. 165 cm (64") wide, the VJ-1638UH is all about versatility; it is the ideal tool to expand your business with the widest possibility of commercial print applications. The printer accommodates 1625 mm (63.97") roll media up to 30 kg as well as rigid boards up to 1625 mm x 1200 mm (63,97" x 47,24") up to 15 mm thick and up to 15 kg.

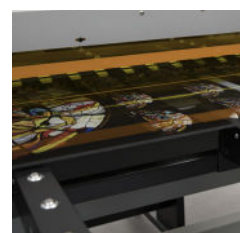
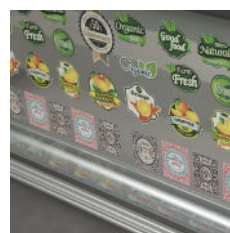
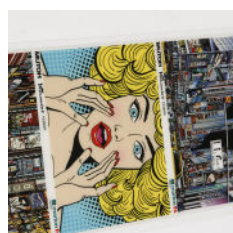
This printer will enable you to maximise your creativity! Next to CMYK, the VJ-1638UH also can be set-up with varnish and white to handle transparent or non-white substrates without losing colour power or to create special print effects and multi-layer printing for graphics with high added value.

Product Highlights

- 1625 mm (63.97") wide LED UV roll as well as rigid printing
- C, M, Y, K LED UV inks – Optional White & Varnish
- Output immediately dry & ready for use or second stage treatment
- Low energy consumption – Low heat generation, ideal for heat sensitive media
- Output is VOC free, no outgassing of prints - No Ozone in the production area - No Mercury - No Lead - No Air Purifier required.
- Automatic media thickness measurement & head height adjustment - Mutoh intelligent interweaving inside with dedicated "UV-weaving"

Application Possibilities

The ValueJet VJ-1638UH will produce high quality graphics for short viewing distances such as trade show graphics, POP & retail signage, backlit banners, individualised wallpaper & interior decoration, small lot packaging prototypes, banners, posters, etc.





64" (165 cm) Dual Head 6 Colour LED UV Printer | SPECIFICATIONS

Technical Key Specifications

Print Technology	Drop-on-demand Micro Piezo Inkjet Technology
Print Head	2 (staggered setup)
Nozzle Configuration	180 nozzles x 8 lines (each head)
Drop Mass Range (pl)	3.8 to 28
Head Height	Automatic *
*: Media thickness is measured electronically and the head height is automatically adjusted	
LED UV lamp life	14.250 hours

Roll Media Specifications

Min./Max. Media Width	182 mm (7,17") / 1625 mm (63,97")
Max. Print Width	1615 mm (63,58")
Max. Media Thickness	15 mm
Media Measurements *	Ø 150 mm / 2" & 3" / 30 kg
*: Standard non-motorised roll-off system	
Ink Drying System	2 Long life LED UV curing lamps

Rigid Media Specifications

Min./Max. Media Width	182 mm (7.17") / 1625 mm (63,97")
Max. Print Width	1615 mm (63,58")
Min. / Max. Media Length	200 mm (7.87") - 1200 mm (47.24")
Max. Media Thickness	15 mm
Max. Media Weight	15 kg
Ink Drying System	2 Long life LED UV curing lamps

Ink Specifications

Ink Type	LED-UV inks
Ink Colours / Volume	CMYK + Varnish 220 ml cassette / 800 ml pack* White 220 ml cassette / 500 ml pack*

* : 800 ml / 500 ml bag requires optional adapter

Ink Setup	CMYK (CCMMYYKK) CMYK + White + Varnish (CMYK+2xWh+2xVa)
Compatibility	ABS, Aluminium board, Cardboard, Fluted & corrugated boards, Glass, heat sensitive flex media like Polyolefin-based (PVC-Free) self-adhesive films, Non-woven, PC, PE, PET, PES, PMMA (acrylic), PP, PS, PVC *

* : Ink adhesion will vary among media type and brand. Some media may require a primer or may benefit from corona treatment. Individual testing is required in function of your choice of material, brand and specific application.

Speed Performance in m²/h

	4 Colour		6 Colour	
Print Mode	CMYK	CMYK Only	White Only	2-Layer Print*
1440 x 1440 Uni	2,86	0,72	2,86	0,37
1440 x 1440 Bi	5,68	1,42	5,68	0,73
720 x 1440 Uni	5,72	2,75	5,72	1,39
720 x 1440 Bi	11,35	5,47	11,35	2,75
720 x 1080 Bi	14,23	6,83	14,23	3,45
720 x 720 Bi	22,71	11,27	22,71	5,50

* : CMYK + white + varnish

Power Consumption

During Printing	< 700 Watt
In Stand-by / Sleep	< 55 W / < 25 W
Power Supply	AC 100-120 V / AC 200-240 - 60/50 Hz - < 4.0 A / 2.0 A

Recommended Working Environment

Temperature	20 °C - 32 °C with Δt: max. 2 °C/h
Humidity	40 % - 60 % (no condensation) with ΔRH: max. 5 % RH/h

Machine Measurements

Width x Depth x Height	2983 x 818 x 1261 mm (roll)
Width x Depth x Height	2983 x 2730 x 1261 mm (rigid)
Weight	197 kg (printer + stand)

Distributed by:

Est. 1991
DESIGNSUPPLY
supporting creativity

0800 018 23 23
sales@designsupply.com