



Made in Japan

2

INDOOR AIR COMFORT
eurofins
CERTIFIED PRODUCT

DropMaster

Eco Ultra/
UMS

Pushing the Boundaries of Speed, Quality & Ease of Use

The Mutoh ValueJet 1638X dual head printer (1625 mm – 64") incorporates the very latest piezo drop-on-demand head technology and new generation electronics. Targeted at sign and display applications, the printer addresses the needs of businesses focusing on both high speed production and top quality print work.

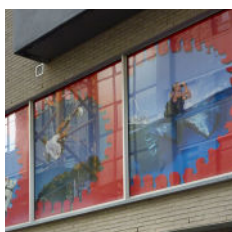
The VJ-1638X delivers **sellable production speeds up to 36 m²/h** and is ideal for established sign makers who need extra versatility and for larger operations that want to extend their capacity and flexibility. A ValueJet 1638X will deliver **best-in-class speed and superior print quality**, without compromise.

Product Highlights

- Compact printer, featuring proven technology, made in Japan
- Speed and quality – the real combination of both
- Cost-effective durable inks for long term outdoor and indoor applications
- Staggered dual head setup with latest generation 1440 nozzle piezo heads
- Mutoh i² Intelligent Interweaving and new DropMaster technology
- Super high resolution prints at 20 m²/h (720 x 1080 dpi)
- Production speeds including 29 and 36 m²/h @ 720 x 720 dpi
- Suited for the production of certified prints – Indoor Air Comfort

Application Possibilities

The VJ-1638X is suited for the production of a wide variety of outdoor and indoor prints : long-term outdoor posters, billboards, building announcements, signs and banners, backlit signage, POS displays, vehicle graphics, fine art reproduction, posters, etc..





64" Sign & Display Printer

SPECIFICATIONS

Technical Key Specifications

Print Technology	Drop-on-demand Micro Piezo Inkjet Technology
Print Head	2 (staggered setup)
Nozzle Configuration	180 nozzles x 8 lines / head
Drop Mass Range (pl)	3.5 to 35
Head Heights (mm)	Low : 1.5 / Middle: 2.5 / High : 4.0

Media Specifications

Media Width	900 mm (36.8") - 1625 mm (63.97")
Max. Print Width	1615 mm (63.58")
Max. Media Thickness	0.3 / 1.3 / 2.8 mm *

* : Max. media thickness is specified per head height

Media Measurements *	Ø 150 mm / 2" & 3" / 30 kg
----------------------	----------------------------

* : Standard non-motorised roll-off system

Media Drying System	Individually & intelligently* controlled pre-heater, fixer & dryer (30 - 50 °C)**
---------------------	---

* : Slowest heater starts first taking into account all target temperatures

** : When printing onto slow drying media or applying high ink loads and/or printing at high speeds an additional drying system may be required.

Power Consumption

During Printing	650 W
In Stand-by	45 W
Warming Up	≤ 1100 W (main) & ≤ 1250 W (heat)
Power Supply	AC 100-120 V / AC 200-240 - 60/50 Hz

Recommended Working Environment

Temperature	22 °C - 30 °C with Δt: max. 2 °C/h
Humidity	40 % - 60 % (no condensation) with ΔRH: max. 5% RH/h

Machine Measurements

Width x Depth x Height	2698 x 885 x 1261 mm
Weight	221 kg

Performance

Speed	Details	Description	Highly recommended for
10.0 m ² /h	1080 x 1440 dpi 12 p	High Quality	Miniature output with intricate details
15.0 m ² /h	720 x 1440 dpi 8 p	Quality	Photo quality
20.0 m ² /h	720 x 1080 dpi 6 p	Quality Production	Small size print to cut stickers
29.0 m ² /h	720 x 720 dpi 4 p	Production	Standard production
36.0 m ² /h	720 x 720 dpi 4 p	Speed Production	Speed production
48.0 m ² /h	360 x 720 dpi 2 p	Billboard	Billboard speed <small>Applicability to be judged on individual basis</small>
94.0 m ² /h	360 x 360 dpi 1 p	Max. Speed	Sprint speed <small>Applicability to be judged on individual basis</small>

Ink Specifications

Ink Type	Eco Ultra / UMS*
* : Prints made with Mutoh UMS inks on Grahtyp GEF non pvc film have obtained an indoor air comfort certificate issued by Eurofins. The first European certificate for interior deco prints.	
Ink Volume	220 ml, 440 ml & 1000 ml * / 440 ml & 1000 ml
* : 1000 ml bags requires optional adapter	
Ink Colours	CMYK
Ink Consumption *	8 ml / m ²
* : Average ink consumption graphics @ 720 dpi - coverage of 67 %	
UV durability - without lamination	3 years outdoor *

* : For heavy duty applications where mechanical stress is involved, lamination is required. Stabilisation is required prior to lamination.

Distributed by:

Est. 1991
DESIGNSUPPLY
supporting creativity

0800 018 23 23
sales@designsupply.com

© Mutoh Belgium nv. All rights reserved. Rev 1.1 - 12/2015. Specifications subject to change without notice. The machine depicted does not necessarily show a standard configuration.

All trademarks mentioned are property of their respective owners. Image in printer provided by and copyrighted by Fotolia www.fotolia.eu

LITP0120 - 12/15