

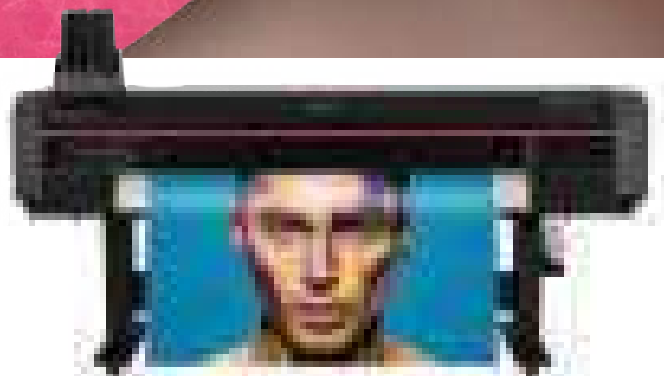
**MUTOH**

Est. 1991

**DESIGNSUPPLY**  
supporting creativity

***XpertJet***

***Wide Format Sign & Display Printers***



**1641SR**



**1682SR**

# Kaizen Spirit !



Mutoh is renowned for its Japan made high quality wide format inkjet printers. A key factor to our competitive success and business philosophy has been our **Kaizen spirit**. The Japanese word Kaizen means "change for the better". For Mutoh, Kaizen implies our company-wide commitment to **create continuous improvement and innovation**. In short, creating **lasting excellence**, one step at a time.

In developing the 64" (162 cm) wide XpertJets, our fifth generation Sign & Display printers, we faithfully took the Kaizen way. Suited for the widest range of indoor and long term outdoor Sign & Display graphics, the all new **XpertJet 1641SR and 1682SR** printer models are the successors of Mutoh's multi-awarded ValueJet 1624X and ValueJet 1638X. They bring **multiple product enhancements and pioneering innovative features** to Sign & Display print professionals.

Join the Mutoh Kaizen spirit ... **K**eep on improving, **A**im for happy customers, **I**mpress with constant top print quality, **Z**ap your sign business into the future, **E**njoy the Mutoh comfort, **N**ever stop your creativity... **KAIZEN**...



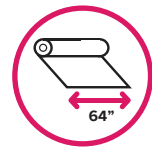
PIEZO VARIABLE DROP



INTELLIGENT INTERWEAVING



DROPMASTER 2



64" WIDE



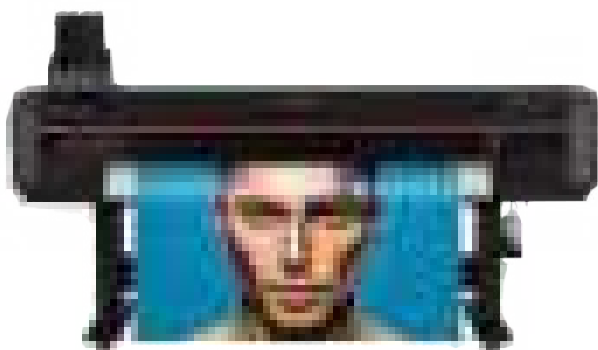
UX RANKING



CMYK + Lk Lc Lm



OUTDOOR / INDOOR



**XpertJet 1641SR**  
1625 mm - 64" / Single Head / 4 Colours



**XpertJet 1682SR**  
1625 mm - 64" / Dual Head / 2 x 4 or 7 Colours



PHOTOGRAPHY



WALLPAPER



VEHICLE WRAPPING



BANNERS



BACKLITS



SOFT SIGN / TEXTILE DISPLAYS

## XPERTJET AT A GLANCE

- **Piezo drop on demand roll fed sign & display printers**

64" - 162 cm / CMYK (1641SR) / 2 x CMYK or CMYK + Lc, Lm, Lk (1682SR).

- **Robustly built platform**

High precision aluminum extrusion for extremely accurate ink dot placement, new cosmetics, new print platen & smart Printed Circuit Board box design.

- **Excellent user experience ranking**

Illuminated print platform, new multi-language intuitive OLED display, automated bidirectional alignment via integrated colour sensor & remote printer monitoring.

- **Enhanced media handling & transport**

Easy single operator media loading through newly designed media feed flanges, worry-free transport of the widest range of roll substrates thanks to multi-level pinch rollers with adaptable pressure.

- **New generation of cost-efficient & low maintenance Eco Solvent Inks**

1 liter packs. Excellent outdoor durability, abrasion and chemical resistance scores.

- **Highly flexible**

For starters or established print shops needing extra versatility and flexibility as well as for businesses focusing on the combination of speed production and top quality print work.



STICKERS



VISIT MUTOH EUROPE ON YOUTUBE



WATCH MOVIE





### New Generation Eco-Solvent Inks

MS41 series inks - Mutoh's fourth generation of eco inks – 7 colours in 1 liter packs – will deliver vibrant high density prints with excellent dot gain suited for long term outdoor and interior deco prints. The ink packs in foil go into re-usable ink pack cases, reducing waste. LED lights will show you the ink level status.

XpertJet 1682SR

C M Y K C M Y K

C M Y K Lk Lc Lm

XpertJet 1641SR

C M Y K

### Multi-level Pinch Rollers - Adaptable Pressure

For worry-free feeding and optimum transport of the widest range of media including thin, delicate or slippery substrates, the XpertJet integrates a newly designed multi-level pinch roller system. The pressure on each individual pinch roller can be adapted.



### Illuminated Print Platform

LED lights above the print platform will enable the printer operator to easily inspect & follow up print jobs in progress.

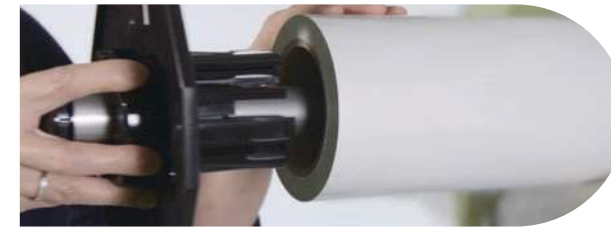
### A Design for Tomorrow

XpertJet features entirely new cosmetics. The new printer platform integrates proven & industry leading Mutoh technology meeting the demands of digital print professionals. It is also packed with multiple product enhancements to provide you comfort and reliability for many years to come.



### Enhanced Roll Off System with New Media Feed Flanges

The robust and easily accessible roll off system will facilitate convenient media loading. Newly designed coreless media feed flanges will allow operators to quickly load media and exchange multiple rolls.

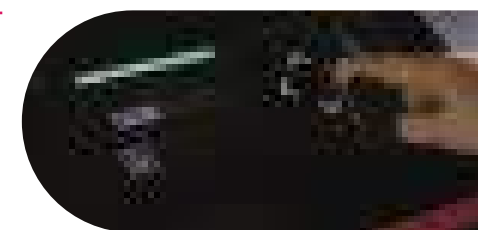


### High-End Piezo Print Heads

Latest generation micro piezo variable drop print heads producing ink drops as small as 3.5 picolitres ensure extremely precise dot generation and consistency for reliable high quality performance. The heads have been specifically tuned for Mutoh's genuine sign & display inks. XPJ-1641SR has one head on board. XP-1682SR has a dual staggered head setup.

### New Intuitive Multi-language OLED Touch Display

The XpertJet has a new OLED touch display for flawless & intuitive printer operation. A colour bar visualises the printer's key status.



### Motorised Take-up Systems

The XpertJets are equipped with a motorised torque winder. You can choose between a 30 kg winder for motorised roll up of media up to Ø 150 mm or a 40 kg winder which is suited for media rolls up to Ø 250 mm.

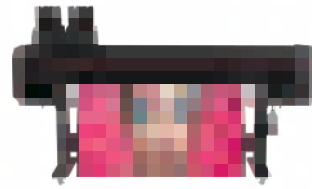
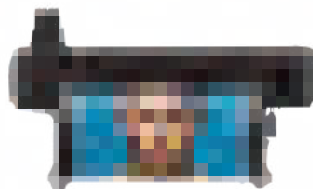
### i² - Intelligent Interweaving

Nothing beats the real thing ! Our well-known Intelligent Interweaving print technology – a game changing feature invented by Mutoh – is obviously on board. Dedicated weave algorithms for the XpertJets will assist you to effortlessly deliver spot on print quality.

### DropMaster2

DropMaster, another Mutoh proprietary feature, automatically adjusts the jet fire timings in function of the thickness of the media loaded. With XpertJet, we have taken DropMaster to the next level: DropMaster2. The XpertJet has a built-in colour sensor for automatic bidirectional alignment, saving you precious time and increasing your efficiency.





## KEY SPECIFICATIONS

	<b><i>XpertJet 1641SR</i></b>	<b><i>XpertJet 1682SR</i></b>
Print Head	1 piezo head	2 piezo heads (staggered)
Nozzle Configuration	180 nozzles x 8 lines/head	
Drop Volume Range (pl)	3.5 to 35	
Resolutions	360x360, 360x720, 720x720, 720x1080, 720x1440 & 1440x1440 dpi	
Head Heights	Low: 1.5 mm / Middle : 2.5 mm / High : 4.0 mm	
Media Thickness (*1)	0.3 / 1.3 / 2.8 mm	
Media Width	up to 1625 mm (63.97")	
Max. Print Width	1615 mm (63.58")	
Media Measurements (*2)	Ø 150 mm / 2" or 3" / 30 kg	
Ink Type / Volume	Eco Solvent MS41 series inks / 1 litre packs	
RIP Software	Included - Onyx RIPCenter Mutoh Edition or SAi FlexiPRINT SE Mutoh Edition	
Take-up System	Included - 30 kg or 40 kg motorised torque winder	

(\*1) Maximum media thickness is specified per head height. (\*2) Standard non-motorised roll-off system.

## PERFORMANCE <sup>1</sup>

	<b><i>XpertJet 1641SR</i></b>	<b><i>XpertJet 1682SR</i></b>	
Colour Setup	<b>C M Y K</b>	<b>C M Y K Lk Lc Lm</b>	<b>C M Y K C M Y K</b>
Production Sweet Spot Speed Range <sup>2</sup>	5 – 10 m <sup>2</sup> /h	5 – 10 m <sup>2</sup> /h	10 – 15 m <sup>2</sup> /h
Fast Production Range <sup>3</sup>	14 -20.5 m <sup>2</sup> /h	10.9 - 18 m <sup>2</sup> /h	21 - 36 m <sup>2</sup> /h
Maximum Speed <sup>4</sup>	53.4 m <sup>2</sup> /h	48.1 m <sup>2</sup> /h	87 m <sup>2</sup> /h

<sup>1</sup> To discover the XpertJet's performance in function of your application, please contact a Mutoh Certified Distributor for a demonstration.

<sup>2</sup> The indicated speed range can be used for worry free printing, allowing the broadest type of work and graphics selection ranging from poster to small detailed stickers for short viewing distances.

<sup>3</sup> Speedy output for selective production. Media, application & print viewing distance dependent.

<sup>4</sup> Applicability to be judged on individual basis.

## MS41 SERIES INKS - NEW GENERATION SIGN & DISPLAY INKS

- 7 colours : C, M, Y, K, Lc, Lm, Lk – 1 liter packs
- Mutoh's fourth generation Eco Solvent inks
- Cost-efficient and operator-friendly thanks to low maintenance
- Wide colour gamut. Deliver vibrant high density prints with excellent dot gain
- Suited for long term outdoor and indoor commercial graphics
- UV durability without lamination up to 3 years outdoor\*

\*: For heavy-duty applications where mechanical stress or environmental impact is involved (floor, vehicle and marine graphics), lamination is required. Stabilisation is required prior to lamination.

## XPJ-1682SR INK SETUP GUIDANCE

<b>C M Y K</b>	<b>C M Y K Lk Lc Lm</b>
Main focus on speed production & outdoor work : Car wraps, banners, billboards, soft signage textile	Main focus on high quality, photorealistic prints (smooth skin tones & gradients) for short viewing distance (< 1 m) : Indoor prints, photo reproduction prints / fine art, small sized prints / small stickers

## APPLICATIONS

Mutoh XpertJet Sign & Display printers, creating durable prints on coated & uncoated substrates, have been specifically developed for high quality volume production of sign and display graphics, for long-term outdoor applications as well as durable prints for indoor use. The printers produce posters, backlit signage, wall coverings, point-of-sale displays, fine art reproduction, vehicle graphics, stickers and much more.

Distributed by:

