

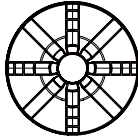
# MakerBot Replicator+

## QUICK START GUIDE

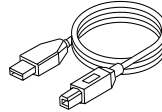
### 1 CHECK BOX CONTENTS



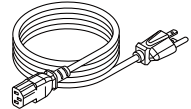
MakerBot® Replicator®  
Smart Extruder+



Large MakerBot  
PLA Filament spool



USB A-to-B cable



Power cord

### 2 SET UP USING OUR APP

## Go to **MakerBot.com/GetStarted**

- Download our app to your computer or mobile phone.
- Download the Replicator+ User Manual and review safety information.
- If you're unable to go online, turn to the reverse side for offline setup.



Make sure to read all safety information before operating your 3D printer.

## SUPPORT

Visit our Support page for troubleshooting guides and advanced information.

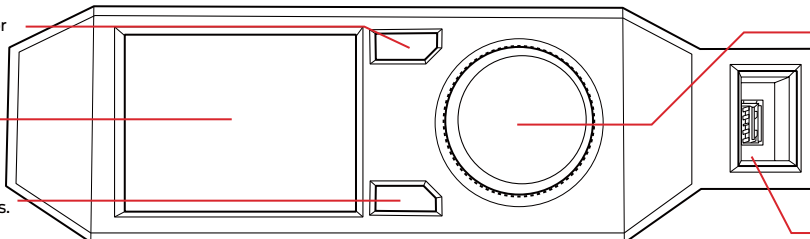
**support.makerbot.com**

### 3 GET TO KNOW THE CONTROL PANEL

Push to go back or  
cancel an action.

LCD Screen

Push to see  
additional options.



Rotate to scroll.  
Push to select.

USB Port

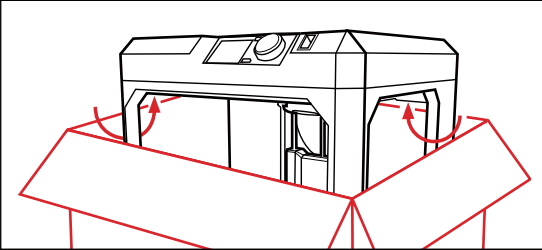
### ➔ SEE REVERSE SIDE FOR OFFLINE SETUP

# MakerBot Replicator+

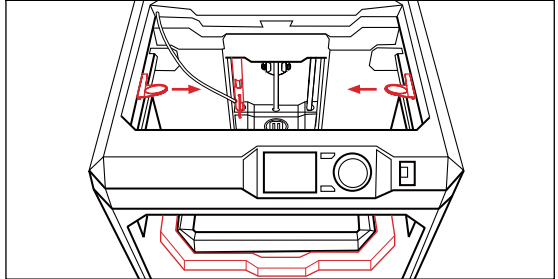
## OFFLINE SETUP

➔ PLEASE BEGIN ON THE REVERSE SIDE

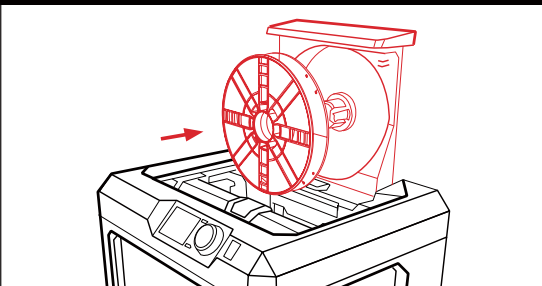
### 1 GRASP SIDES OF THE REPLICATOR+ AND LIFT OUT OF BOX



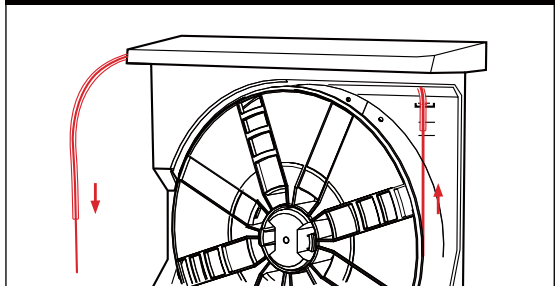
### 2 REMOVE CLIPS FROM BELT AND ROD REMOVE FOAM FROM UNDER PLATE



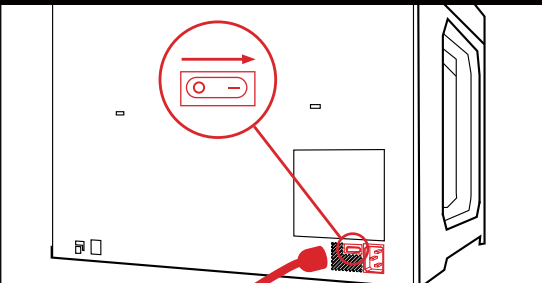
### 3 LIFT DRAWER & INSTALL FILAMENT



### 4 ROUTE FILAMENT THROUGH GUIDE TUBE AND CLOSE DRAWER



### 5 PLUG IN POWER CORD AND POWER ON



### 6 FOLLOW INSTRUCTIONS ON CONTROL PANEL SCREEN

