

BLI Comparative Lab Test Report

SEPTEMBER 2016

Canon imagePROGRAF PRO-2000 vs. Epson SureColor SC-P7000



Canon imagePROGRAF PRO-2000



Epson SureColor SC-P7000

| Advantage ✓ | Canon imagePROGRAF PRO-2000 | Epson SureColor SC-P7000 |
|---|-----------------------------|--------------------------|
| Colour Image Quality | ✓ | |
| Black Image Quality | ✓ | |
| Print Productivity | ✓ | |
| Ink Consumption | ✓ | |
| Device Feature Set | ✓ | |
| Print Driver Feature Set | = | = |
| Printhead Reliability / Cleaning Routines | = | = |

TEST OBJECTIVE

Buyers Laboratory LLC (BLI) was commissioned by Canon Europe to conduct confidential document imaging device performance testing on the Canon imagePROGRAF PRO-2000 and the Epson SureColor SC-P7000, and produce a report comparing the relative strengths and weaknesses of the two products in terms of image quality, productivity, ink consumption, device feature set, driver functionality and printhead stability and cleaning routines. All testing was performed in BLI's test facility in Wokingham, UK.

EXECUTIVE SUMMARY

The Canon PRO-2000 outperformed the Epson SureColor SC-P7000 in the majority of the categories in BLI's evaluation. It delivered a superior productivity performance, better image quality overall, lower ink consumption and a richer device feature set when compared with the Epson model. A significant productivity-boosting advantage for the Canon model is its hot-swap ink tank design, which lets users replace ink cartridges while the device is still actively printing. In contrast, when the Epson SC-P7000 runs out of ink, printing has to stop for the cartridge to be replaced, which leads to some operator downtime. Moreover, the Canon device's single printhead is user-replaceable (the Epson model's printhead is service-replaceable), which helps to maximize uptime.

Image quality delivered by both units was entirely congruous with the standard expected of models that are aimed at the Graphics Arts (GA) marketplace; yet, the Canon PRO-2000 had the overall edge with its brighter colours, sharper detailing, more natural-looking skin tones, higher optical densities for black, cyan and magenta, and crisper text and fine lines. Both models produced excellent colour gamuts on photo paper, with the Canon delivering a slightly smaller (by 8.9%) gamut than that of the Epson model. The Epson also delivered a higher optical density for yellow.

The Canon model also performed better in terms of ink consumption, using significantly less ink in terms of net weight than the Epson SC-P7000 when printing 50-page runs of three different test documents in Standard mode on the Canon device and Quality (level 2)/Speed (level 2) modes on the Epson unit using matte coated, proofing and semi-gloss media. One factor that affects the Epson model's ink consumption is that some ink will be used in the process of changing from matte black to photo black inks (or vice versa), as they share the same printhead.

Both models' printheads performed reliably throughout the evaluation, with neither experiencing any problems with nozzle clogging when powered off over a weekend.

The Canon PRO-2000 offers a stronger device feature set, which includes its aforementioned hot-swap ink tanks, higher memory capacity, a 320-GB hard drive (which is only offered as an option to Epson users), lower rated power consumption in standby mode and the option to install a dual-roll unit, giving users the added flexibility of switching between different media types or sizes without having to reload the media each time. However, the Epson SC-P7000 delivers smaller (but variable) ink-drop sizes and has a lower advertised power consumption while printing.

Both models offer a comparable feature-rich driver set; the Canon model offers a greater number of media profiles (although each lets users build a library of custom media profiles), a flexible layout nesting option to save on paper, and security watermark options. Canon's Color imageRUNNER Enlargement Copy Mode allows users to integrate with a smaller-format MFP to produce enlarged poster-size copies, although this functionality is matched by Epson's CopyFactory utility. ICC profile settings and built-in colour adjustment settings are available with both drivers, with the Epson driver offering a handy thumbnail preview for users to check the effects on their image as they make their changes. In addition, the Epson model offers the option of attaching an X-Rite Spectrophotometer (which Epson calls a SpectroProofer) to provide more precise colour management control. While the Canon PRO-2000 does not offer this option, the device comes with standard calibration features which allow users to calibrate the printer not only with the manufacturer's own-brand or genuine paper, but other media brands as well, and let administrators control colour remotely across the PRO-1000/2000/4000 series to ensure colour consistency.

In conclusion, with its superior productivity, more efficient use of ink and excellent overall image quality the Canon PRO-2000 is judged to be the stronger performer in BLI's evaluation.

Image Quality

| Advantage ✓ | Canon imagePROGRAF PRO-2000 | Epson SureColor SC-P7000 |
|---------------------------------|-----------------------------|--------------------------|
| Text | ✓ | |
| Fine Lines | ✓ | |
| 1x1 Pixel Grid | ✓ | |
| Halftone Range | = | = |
| Halftone Fill | = | = |
| Solid Density | ✓ | |
| Colour Drift across FOGRA39 | | ✓ |
| Consistency of three skin tones | = | = |
| Consistency of neutral grey | = | = |
| Colour Gamut | | ✓ |
| Business Graphics | ✓ | |
| Photographic Images | ✓ | |

+, — and ○ represent positive, negative and neutral attributes, respectively.

- Image quality testing was done with Canon's own Semi-gloss Photo 280-gsm media and Epson's own Semi-gloss Photo 250-gsm media, with quality set to Highest (1200 dpi) on the Canon model, and the Epson model set to Max Quality Level 5 (2880 x 1440 dpi).
- + As would be expected of two models aimed at the Graphic Arts (GA) marketplace, both units delivered a very high standard of output in colour appropriate for their poster printing target markets. However, the Canon PRO-2000 has the overall edge with its more vibrant colours, sharper detailing and crisper text and fine lines.
- + The Canon PRO-2000 and the Epson SC-P7000 displayed clear formation of fonts in colour mode down to 3-point size. Canon's serif and sans serif fonts were judged very good as they were crisper than those from the Epson device, which were rated good.
- + Both devices delivered very good vertical and horizontal fine lines down to 0.1-pt. size but the Epson device showed a significant amount of stair-stepping in diagonal lines compared with a minimal amount of stair-stepping in output from the Canon model.
- + Circles produced by both models were well formed, although the Canon model delivered far smoother circles than those produced by the Epson model, which exhibited some stair-stepping.
- + The Canon PRO-2000 produced the 1x1 pixel grid in CMY with no quality issues. Although the Epson SC-P7000 delivered consistent coverage across the 1x1 pixel grid, its dot laydown was less well defined and was rated good as opposed to very good for the Canon model.
- Both models delivered colour halftone output across the full range—from the 10% to the 100% dot-fill levels—with distinct transitions between all levels.
- Both models delivered an equally impressive range of halftone fills in colour mode, which were smooth and consistent throughout.

- + The Canon PRO-2000 delivered far higher densities for cyan and magenta, and also for black (an important attribute for the photography market); the Epson model delivered a higher optical density for yellow.
- During BLI’s colour drift analysis, in which the FOGRA39 media wedge is submitted to print before and after productivity and ink consumption tests, and measured using EFI Colour Verifier software, the Epson device delivered a much lower mean Delta E drift of 0.8 than the Canon unit’s mean Delta E, which was 6.0. (The PRO-2000 tested is a pre-production model with pre-matured mechanical structure, so results with production devices may differ.)
- When evaluating the consistency with which different skin tones were delivered, the results were fairly even. The Canon model displayed fractionally smaller variance with two of the three skin shade when compared with the Epson model and slightly greater variance in the other, however overall there’s no meaningful real-world difference that’s discernible to the naked eye.
- Neutral grey consistency was maintained well by both models, with equally low variance across the page indicated by low Delta E values, at which the degree of drift would not be discernible to the naked eye.
- Both models produced exceptional colour gamuts; the Canon device’s colour gamut was 8.9% smaller than that achieved by the Epson model when printed on semi-gloss photo media in highest quality settings, with a CIE volume of 811,145 compared with 890,605 for the Epson model.
- + The Canon model had the advantage with its business graphics output which was judged to have smoother and finer lines, whereas lines were less well defined on the Epson model’s output.
- + BLI analysed a range of colour and greyscale regions in photographic images output by both devices and judged the Canon model to have the outright advantage for its vibrant colours and excellent fine detailing in light and dark contrast areas. In contrast, the Epson model’s output exhibited less bright colours and suffered from a loss of integrity in dark contrast areas.
- + The Canon model exhibited very good, natural-looking skin tones in photographic images; while the Epson unit produced skin tones that were flat and pale in comparison.

Print Productivity

| Advantage ✓ | Canon imagePROGRAF PRO-2000 | Epson SureColor SC-P7000 |
|---|-----------------------------|--------------------------|
| First Page Out From Ready State (Standard/Speed) | ✓ | |
| First Page Out From Ready State (High/Quality) | ✓ | |
| First Page Out From Ready State (Highest/Max Quality) | ✓ | |
| Throughput Speed Portrait (Standard/Speed) | ✓ | |
| Throughput Speed Portrait (High/Quality) | ✓ | |
| Throughput Speed Portrait (Highest/Max Quality) | ✓ | |
| Throughput Speed Retail Poster (Standard/Speed) | ✓ | |
| Throughput Speed Retail Poster (High/Quality) | ✓ | |
| Throughput Speed Retail Poster (Highest/Max Quality) | ✓ | |

- + When printing a high-resolution portrait, the Canon model delivered faster first-page-out times than the Epson model from the ready state in all modes; it was 24.5% faster than that of the Epson device in Standard/Speed, 23.1% faster in High/Quality and 30.7% faster in Highest/Max Quality.
- + When printing a medium-resolution signage retail poster, the Canon model easily surpassed the Epson model in terms of speed, with faster (by 45.6% in Standard/Speed, 45.3% in High/Quality and 32.7% in Highest/Max Quality) first-page-out times from ready state in all modes.
- + In BLI's throughput speed evaluation, the Canon PRO-2000 displayed a clear throughput speed advantage over the Epson model when printing five pages of a single-page A1-size high-resolution portrait test document in three quality modes; its per-page speed was 30.3% faster in Standard/Speed mode, 26.6% faster in High/Quality mode and 29.9% faster in Highest/Max Quality mode.
- + When printing five pages of a single-page A1-size medium-resolution retail poster test document, the Canon model again outperformed the Epson model, with per-page times that were 48.6% faster in Standard/Speed mode, 46.5% faster in High/Quality mode and 36.6% faster in Highest/Max Quality mode.

Ink Consumption

BLI analysts observed that, owing to the vagaries of inkjet technology (for example, head flushing and calibration routines can occur at any time during testing), the same test can produce different results at different times. Although BLI makes every effort to ensure that devices are tested on a level playing field, the test results should be regarded as an indicator of likely performance and not as a prediction of actual ink consumption in a real-world environment.

Results averaged across three tests of 50-set A1 printing in various tested modes

| Average weight of ink used (grams) | Canon imagePROGRAF PRO-2000 | Epson SureColor SC-P7000 |
|---------------------------------------|-----------------------------|--------------------------|
| PACKAGING PROOF (Standard/Speed Mode) | 149.6 | 250.3 |
| RETAIL POSTER (Standard/Quality Mode) | 127.8 | 196.4 |
| STUDIO PORTRAIT (Standard/Speed Mode) | 143.4 | 180.3 |

- + When printing BLI's Packaging Proof test target using Standard/Speed mode on glossy proofing media, the Canon PRO-2000 used significantly less (40.2%) ink in terms of net weight than the Epson SC-P7000.
- + In the BLI Retail Poster print run evaluation using Standard/Quality mode on matte coated media, the Canon PRO-2000 used 34.9% less ink in terms of net weight than the Epson SC-P7000.
- + When printing BLI's Studio Portrait ink consumption test target using Standard/Speed mode on semi-gloss photo media, the Canon PRO-2000 used 20.5% less ink in terms of net weight than the Epson SC-P7000.

Device Feature Set

- + The Epson SureColor SC-P7000 employs eleven inks, four of which are different shades of black, whilst the Canon PRO-2000 employs twelve inks including two black and two grey inks. The fact that the Canon inks are replaceable during operation helps to reduce downtime.
- + The Canon model's single printhead contains more nozzles per colour than the Epson unit's single print-head—18,432 nozzles compared to 3,960 nozzles.
- + The Canon model's printhead is user-replaceable, whilst the Epson device's printhead is service replaceable.
- The Canon unit's ink delivery system dispenses a slightly larger drop size (4 picoliter) than the Epson ink delivery system (3.5 picoliter).
- Both models offer the same capacity (700 ml) for the higher-capacity cartridges.
- Both models offer borderless printing.
- + The Canon unit supports a larger diameter of roll paper (170 mm as opposed to 150 mm with the Epson device).
- + The Canon model can support an optional dual-roll unit, giving users the added flexibility of switching between different media types or sizes without having to reload the media each time, or allowing the automatic take-up of printed output; the Epson model does not offer this option.
- + The Canon model supports printing PDF and JPEG files from USB flash drives, which is not available with the Epson model.
- + The Canon model has a larger standard memory capacity (3 GB) than the Epson unit, which has a 1-GB memory.
- + The Canon model has a standard 320-GB hard drive, which allows for the storage of commonly used documents and aids spooling workflow; the Epson device offers a 320-GB hard drive only as an option.
- The Canon model has a higher advertised peak energy value (88 W) than the Epson model (65 W) while printing.
- + However, the Canon PRO-2000's energy consumption in standby mode (where it will spend a large amount of time) is 1.8 W compared with 5.4 W for the Epson device.
- Epson users have the option of attaching an X-Rite Spectrophotometer (which Epson calls a SpectroProof-er) to ensure colour consistency and to automate workflows for colour calibration, target measurement and media profile generation on Epson and third-party devices when used in conjunction with software tools offered by the company, whilst the Canon PRO-2000 does not offer this as an option.
- + Yet, Canon users can use the PRO-2000's standard calibration features which allow users to calibrate the printer not only with the manufacturer's own-brand or genuine paper, but other media brands as well, while administrators can control colour and monitor the calibration status across the PRO-1000/2000/4000 series via Canon's free Device Management Console utility to ensure colour consistency.
- The Canon model includes a plug-in for Microsoft Office, which provides a wizard that walks users through the process of creating posters from Word, Excel or PowerPoint, avoiding the need for complex resizing. A similar poster creation feature is offered with the Epson device; its LFP Print Plug in for Office utility (avail-

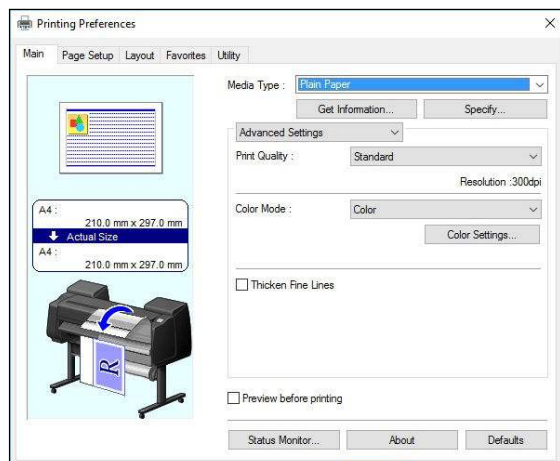
able as a free download) enables users to click on a file name and, without opening the application, set individual options such as print size, rotation, print quality and number of copies before printing. Supported file formats include PDF, TIFF, JPEG and PPT. A free download plug in provides compatibility with other MS Office applications.

- + The Canon model includes PosterArtist Lite, Canon's software for creating posters and signage in simple steps. The full version of Canon PosterArtist, available as an option, offers more advanced features such as auto design, variable data printing, in-application editing features, plus additional templates, photos and clip art. Epson offers CopyFactory as an extra-cost option, which enables poster and banner creation on Epson large-format printers, but was not evaluated by BLI.
- + The Canon device includes a media mismatch option, which places on hold jobs that can't be printed due to incorrect media being loaded, while jobs that can be completed are printed; the held jobs are printed once the required paper is loaded, all of which minimizes the risk of ink and paper being wasted. The Epson device offers a paper size check setting which, if enabled, means it will stop printing altogether, should it detect an issue.
- Canon offers a Print Studio PRO plug-in which offers support for a variety of software options designed to appeal to specific segments of the Graphic Arts market such as photography and fine art display. These include a print plug-in for Photoshop, which, according to Canon, allows users to print 16-bit files directly from Adobe RGB with a wide gamut and clear tonal gradation, and a plug-in for DPP (Digital Photo Professional) that includes a 'Digital Lens Optimizer' to improve photographic image quality and enhance depth of field; Adobe Lightroom is also supported. Print Studio Pro has additional functions allowing users to add text to the photos; choose black and white photo mode, and save favourite settings, among others. Epson's Print Layout is a plug in for Photoshop, Lightroom and Nikon View NX-i, which lets users perform more advanced colour management, layout and print photos, optimize black-and-white photos and save media types and sizes for future use.
- Canon's Accounting Manager, accessed via the Status Monitor, offers comprehensive accounting management for all print jobs. Users enter the actual costs for individual inks and media types, and the cost per job is calculated automatically and displayed. For each job, the media type, area, ink used and total print time are listed, and more detailed cost and consumption information can be obtained by double-clicking on an individual job name or by highlighting a range of different jobs. Job cost information can then be saved in .CSV format and opened in Excel. Epson offers similar accounting management and tracking capabilities via its LFP Accounting Tool software, which is available to download for free from Epson's website.

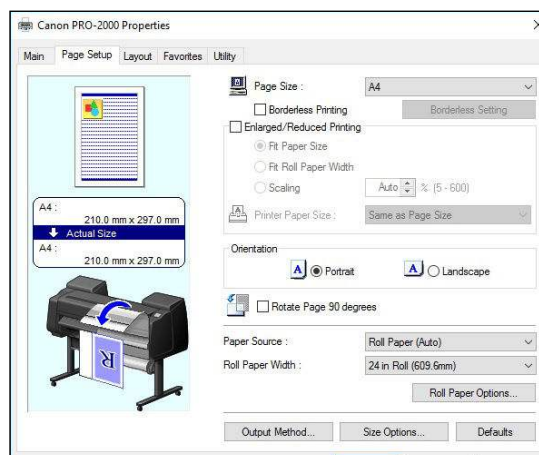
Driver Feature Set

- + The Canon driver includes 51 media profiles versus 47 for the Epson driver, although both units permit users to build a library of custom media profiles
- + The Canon driver includes a watermark capability; the Epson driver does not.
- + The Canon driver also includes a Thicken Fine Lines image enhancement option, which is not available with the Epson model.
- + Both the Canon and Epson drivers offer N-up printing (up to 16 and 4, respectively).
- Poster printing capability (2 x 2) is offered by the Canon model, but Epson users can select a further option for 4 x 4 poster printing.

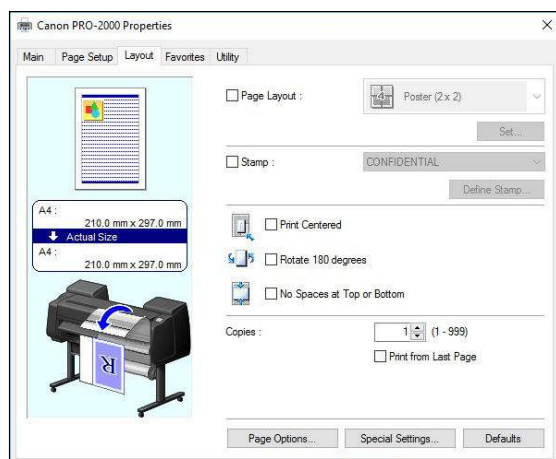
- Although the Canon driver offers page-stamping (date, time, user-name and page number), a wider range of page stamping options is available with the Epson driver, including a free text comments field for users to add personal observations.
- The Canon driver includes a utility, Colour imageRUNNER Enlargement Copy Mode, which allows users to integrate a Canon MFP or other scanner with the PRO-2000. Documents scanned by the Canon MFP are automatically routed to a hot folder, which is monitored by the PRO-2000 driver. Users can also set up other scanners to route files directly to the hot folder. The image is then resized and printed, offering a fast, easy-to-use poster creation tool for office users. A similar feature is offered to Epson users in the form of its Epson CopyFactory Utility, but has not been tested by BLI.
- + The Canon model's device status monitor can be accessed directly from the first tab of the driver, but Epson users must perform an extra click to access device status via an icon on the Utility tab.
- The Canon driver features a wide selection of simple colour adjustment options, which include brightness and contrast, as well as a sliding scale of adjustments for cyan, magenta, yellow and black. The Epson driver has similar adjustment options for cyan, magenta and yellow, but not black, along with brightness, contrast and saturation.
- The print driver for the Epson model provides a handy thumbnail preview for users to check the effects on their image as they make colour adjustments.
- The Canon driver includes advanced colour-matching capabilities, including the ability to match ICC profiles and select the rendering intent based on different elements in the document. The Epson Color Calibration Utility offers 'Paper Preset Management', which offers users the ability to create, install and export media ICC profiles, and the optional spectrophotometer provides colour management control.
- The Canon driver includes a unidirectional print selection; unidirectional printing is also supported by the Epson SC-P7000 driver.



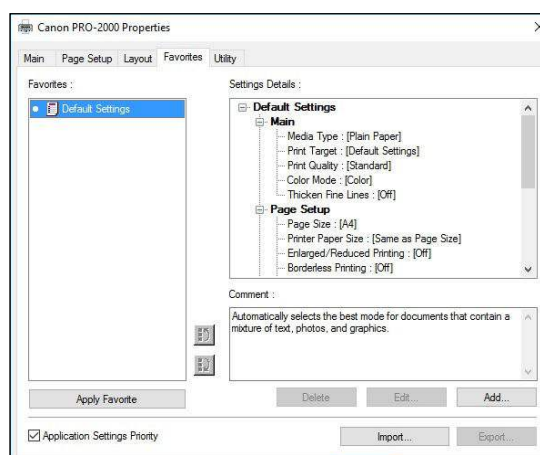
Canon imagePROGRAF PRO-2000 Print Driver Main Tab



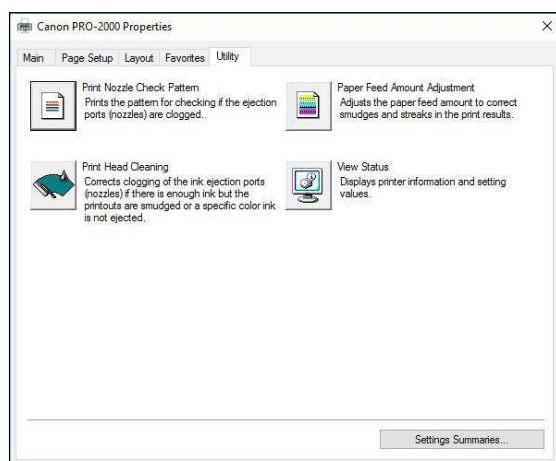
Canon imagePROGRAF PRO-2000 Print Driver Page Setup Tab



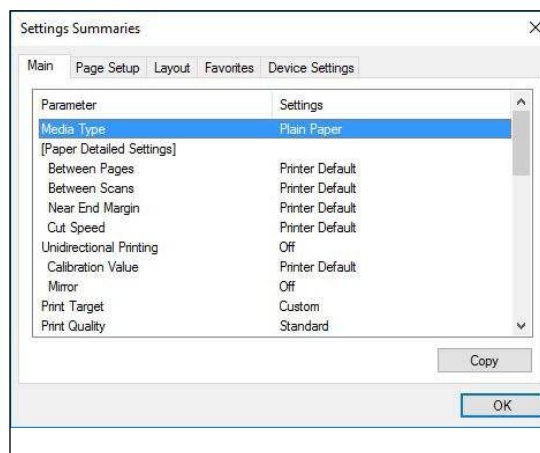
Canon imagePROGRAF PRO-2000 Print Driver Layout Tab



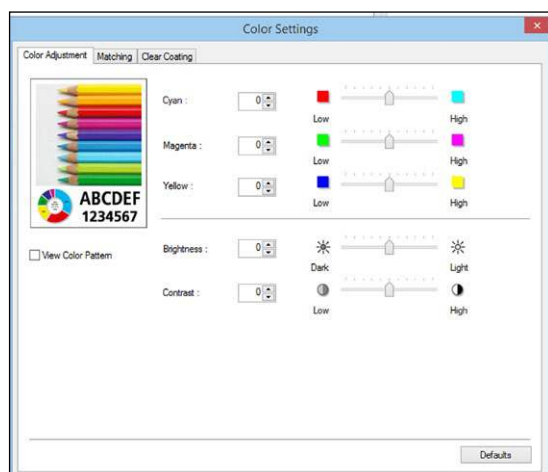
Canon imagePROGRAF PRO-2000 Print Driver Favourites Tab



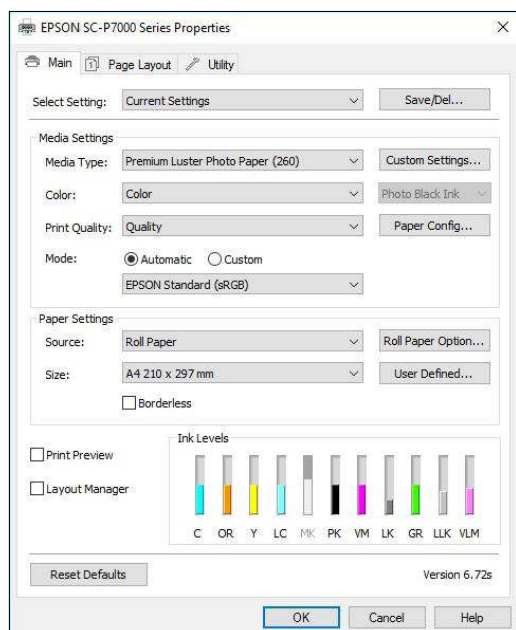
Canon imagePROGRAF PRO-2000 Print Driver Utility



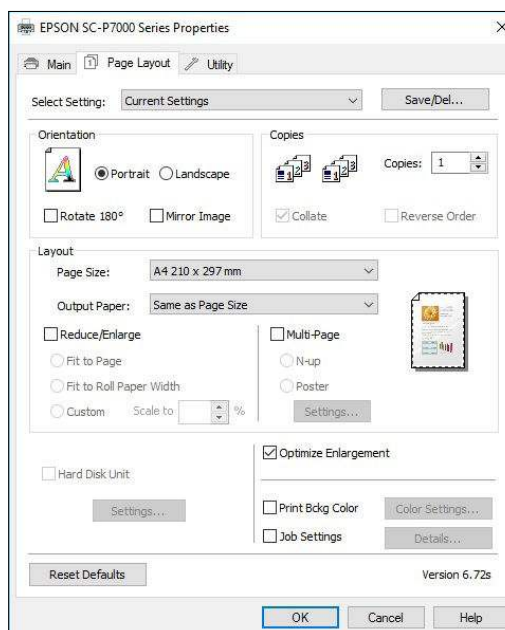
Canon imagePROGRAF PRO-2000 Settings Summaries



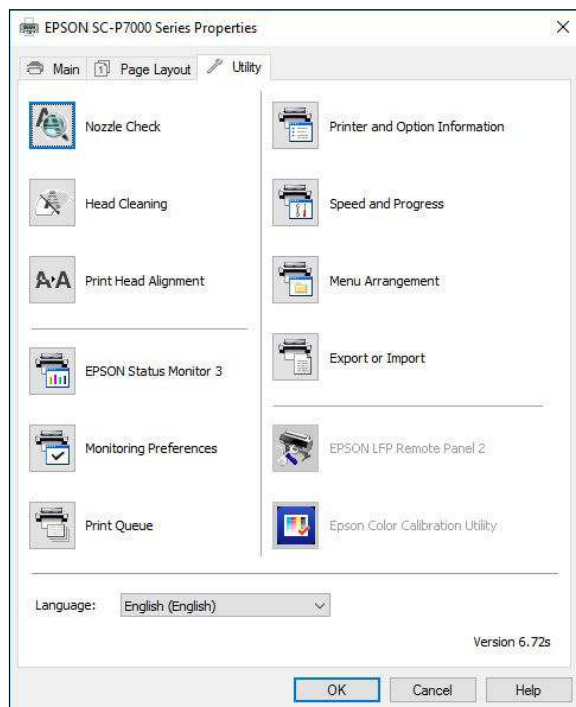
Canon imagePROGRAF PRO-2000 Print Driver Colour Adjustment Tab



Epson SureColor SC-P7000 Print Driver Main Tab



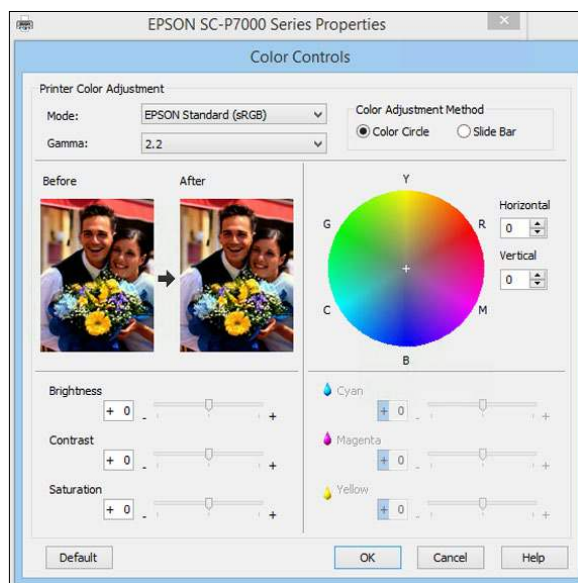
Epson SureColor SC-P7000 Print Driver Page Layout Tab



Epson SureColor SC-P7000 Print Driver Utility Tab



Epson SureColor SC-P7000 Print Driver Current Settings



Epson SureColor SC-P7000 Print Driver Colour Adjustments Tab

Printhead Reliability / Cleaning Routines

- Both models offer various choices of settings for performing nozzle checks at the control panel. The Canon PRO-2000 has an Auto nozzle check setting, which is the default setting. In addition, it offers settings at the control panel to perform a check after one page, after 10 pages or to disable it entirely. Nozzle checks can be performed on the Epson model either at the control panel or via the driver. If the Auto Nozzle Check option is enabled, there are three choices of settings for nozzle checks: Periodic (the default mode), On (performs a check at each job) or Off (the machine performs a check under specific conditions, such as after initial ink charging).
- If a clogged nozzle is detected on the Canon unit, it pauses during operation and automatically runs a cleaning cycle to maintain image quality and consistency; it resumes printing once the cleaning cycle is completed, with no user intervention required. If a clogged nozzle is detected on the Epson device, the machine can run a cleaning cycle immediately without the user having to print a nozzle check pattern, with the number of automatic cleaning cycles set in the driver (a choice of one—the default—to three). There are two types of cleaning offered: 'Normal' and 'Power' – and users can opt to clean either one or more pairs of nozzles, or all nozzles at once.
- When the two devices were powered off completely over a weekend, the Canon model had no issues with nozzles clogging. If a nozzle check pattern was requested, it printed with perfect accuracy every time. Similarly, the Epson SC-P7000 did not suffer any issues with nozzles clogging and printed a faultless nozzle check pattern upon request.
- + As the Epson SC-P7000 has both matte black and photo black inks which share the same printhead, users are required to choose to switch between them for a specific job at the control panel (or this can be done automatically via the Auto Black Change setting in the printer driver)—a process which takes about two minutes, and uses an indeterminate amount of ink to complete
- + A standard cleaning cycle performed on the Canon model takes approximately 4 minutes, 30 seconds on average to complete, whilst on the Epson model, a Standard clean cycle takes approximately 7 minutes.

SUPPORTING TEST DATA

Colour Throughput Time – High Resolution Portrait Printing

| Canon imagePROGRAF PRO-2000 (time in seconds) | | | Epson SureColor SC-P7000 (time in seconds) | | |
|---|--------|---------|--|-------------------|-----------------------|
| Standard | High | Highest | Speed (Level 2) | Quality (Level 4) | Max Quality (Level 5) |
| 272.89 | 415.29 | 626.85 | 391.46 | 565.77 | 894.48 |

A single page high-resolution A1 portrait TIFF file was printed as a 5-set job using the Canon model's driver set to Canon Premium Semi-Gloss 2 280gsm and the Epson device's driver set to Premium Semi-Gloss Paper 250gsm. Both devices were loaded with 24" rolls. The time indicated is the average speed per page in seconds (based on timing from the cutting of the first page to the cutting of the final page and dividing by four to exclude the initial processing time).

Colour Productivity

| Canon imagePROGRAF PRO-2000 (time in seconds) | | | Epson SureColor SC-P7000 (time in seconds) | | |
|---|--------|---------|--|-------------------|-----------------------|
| Standard | High | Highest | Speed (Level 2) | Quality (Level 4) | Max Quality (Level 5) |
| 131.55 | 239.23 | 333.20 | 255.88 | 447.20 | 525.58 |

A single-page medium resolution A1 signage retail poster JPEG file was printed as a 5-page job using the Canon device's driver set to Matte Coated paper 140gsm and the Epson model's driver set to Double Weight Matte paper. Both devices were loaded with 24" rolls. The time indicated is the average speed per page in seconds (based on timing from the cutting of the first page to the cutting of the final page and dividing by four to exclude the initial processing time).

First-Page-Out Time from Ready State – High-Resolution Portrait Printing

| Canon imagePROGRAF PRO-2000 (time in seconds) | | | | Epson SureColor SC-P7000 (time in seconds) | | |
|---|----------|--------|---------|--|-------------------|-----------------------|
| | Standard | High | Highest | Speed (Level 2) | Quality (Level 4) | Max Quality (Level 5) |
| Time Before Printing Commences | 25.26 | 25.53 | 25.53 | 29.25 | 29.98 | 30.06 |
| First Print Out | 266.94 | 412.46 | 604.28 | 353.55 | 536.24 | 871.67 |

First-page-out times are achieved by sending an A1 high resolution portrait TIFF file to print, timed from release to page out with the Canon model's driver set to Canon Premium Semi-Gloss 2 280gsm and the Epson device's driver set to Premium Semi-Gloss Paper 250gsm. Both devices were loaded with 24" rolls.

First-Page-Out Time from Ready State – Medium-Resolution Signage Retail Poster Printing

| Canon imagePROGRAF PRO-2000 (time in seconds) | | | | Epson SureColor SC-P7000 (time in seconds) | | |
|---|----------|--------|---------|--|-------------------|-----------------------|
| | Standard | High | Highest | Speed (Level 2) | Quality (Level 4) | Max Quality (Level 5) |
| Time Before Printing Commences | 24.11 | 24.19 | 23.99 | 30.75 | 30.97 | 30.64 |
| First Print Out | 133.26 | 231.59 | 336.14 | 244.89 | 423.25 | 499.35 |

First-page-out times are achieved by sending an A1 medium resolution signage retail poster JPEG file to print, timed from release to page out with the Canon device's driver set to Matte Coated paper 140gsm and the Epson model's driver set to Double Weight Matte paper. Both devices were loaded with 24" rolls.

Image Quality

Colour Optical Density Evaluation

| Canon imagePROGRAF PRO-2000: Semi-Glossy Photo Paper | | | | | | |
|--|------|------|------|------|------|------|
| Highest (2400 x 1200 dpi) | | | | | | |
| | 1 | 2 | 3 | 4 | Max. | Min. |
| Cyan | 1.81 | 1.84 | 1.76 | 1.80 | 1.84 | 1.76 |
| Magenta | 1.71 | 1.72 | 1.70 | 1.71 | 1.72 | 1.70 |
| Yellow | 1.33 | 1.33 | 1.32 | 1.32 | 1.33 | 1.32 |
| Black | 2.72 | 2.74 | 2.73 | 2.73 | 2.74 | 2.72 |

| Epson SureColor SC-P7000: Semi-Glossy Photo Paper | | | | | | |
|---|------|------|------|------|------|------|
| Max Quality Level 5 (2880 x 1440 dpi) | | | | | | |
| | 1 | 2 | 3 | 4 | Max. | Min. |
| Cyan | 1.69 | 1.69 | 1.68 | 1.68 | 1.69 | 1.68 |
| Magenta | 1.08 | 1.09 | 1.09 | 1.09 | 1.09 | 1.08 |
| Yellow | 1.45 | 1.44 | 1.44 | 1.44 | 1.45 | 1.44 |
| Black | 2.59 | 2.62 | 2.59 | 2.60 | 2.62 | 2.59 |

Note: Colour density readings were assessed by printing a BLI test file on proofing paper in high-quality colour settings (with Colour Correction set to off on the Canon device and Colour Adjustment set to off on the Epson device) and measuring the density of 100% dot fills using an XRite 508 densitometer.

Skin Tone and Neutral Grey Consistency

| Skin Tone 1 (C=6, M=15, Y=16, K=0) | | |
|------------------------------------|-----------------------------|--------------------------|
| | Canon imagePROGRAF PRO-2000 | Epson SureColor SC-P7000 |
| Colour block | | |
| 2 | 0.40 | 0.50 |
| 3 | 0.30 | 0.20 |
| 4 | 0.50 | 0.20 |
| 5 | 0.60 | 0.80 |
| 6 | 0.30 | 0.80 |
| 7 | 0.70 | 0.30 |
| 8 | 0.20 | 0.40 |
| 9 | 0.30 | 0.60 |
| Max. Delta E Variance | 0.5 | 0.6 |

| Skin Tone 2 (C=30, M=63, Y=75, K=0) | | |
|-------------------------------------|-----------------------------|--------------------------|
| | Canon imagePROGRAF PRO-2000 | Epson SureColor SC-P7000 |
| Colour block | | |
| 2 | 0.10 | 0.50 |
| 3 | 0.20 | 0.70 |
| 4 | 0.10 | 0.30 |
| 5 | 0.30 | 1.10 |
| 6 | 0.20 | 0.90 |
| 7 | 0.60 | 0.20 |
| 8 | 0.50 | 0.60 |
| 9 | 0.70 | 0.50 |
| Max. Delta E Variance | 0.6 | 0.9 |

| Skin Tone 3 (C=19, M=33, Y=50, K=0) | | |
|-------------------------------------|-----------------------------|--------------------------|
| | Canon imagePROGRAF PRO-2000 | Epson SureColor SC-P7000 |
| Colour block | | |
| 2 | 0.10 | 0.70 |
| 3 | 0.50 | 0.40 |
| 4 | 0.50 | 0.60 |
| 5 | 0.40 | 0.80 |
| 6 | 0.60 | 0.50 |
| 7 | 0.70 | 0.40 |
| 8 | 0.60 | 0.50 |
| 9 | 1.10 | 0.50 |
| Max. Delta E Variance | 1.0 | 0.4 |

| Neutral Grey | | |
|-----------------------|-----------------------------|--------------------------|
| | Canon imagePROGRAF PRO-2000 | Epson SureColor SC-P7000 |
| Colour block | | |
| 2 | 0.70 | 0.50 |
| 3 | 0.30 | 0.40 |
| 4 | 0.30 | 0.10 |
| 5 | 0.10 | 0.40 |
| 6 | 0.40 | 0.40 |
| 7 | 0.20 | 0.10 |
| 8 | 0.30 | 0.40 |
| 9 | 0.10 | 0.30 |
| Max. Delta E Variance | 0.6 | 0.4 |

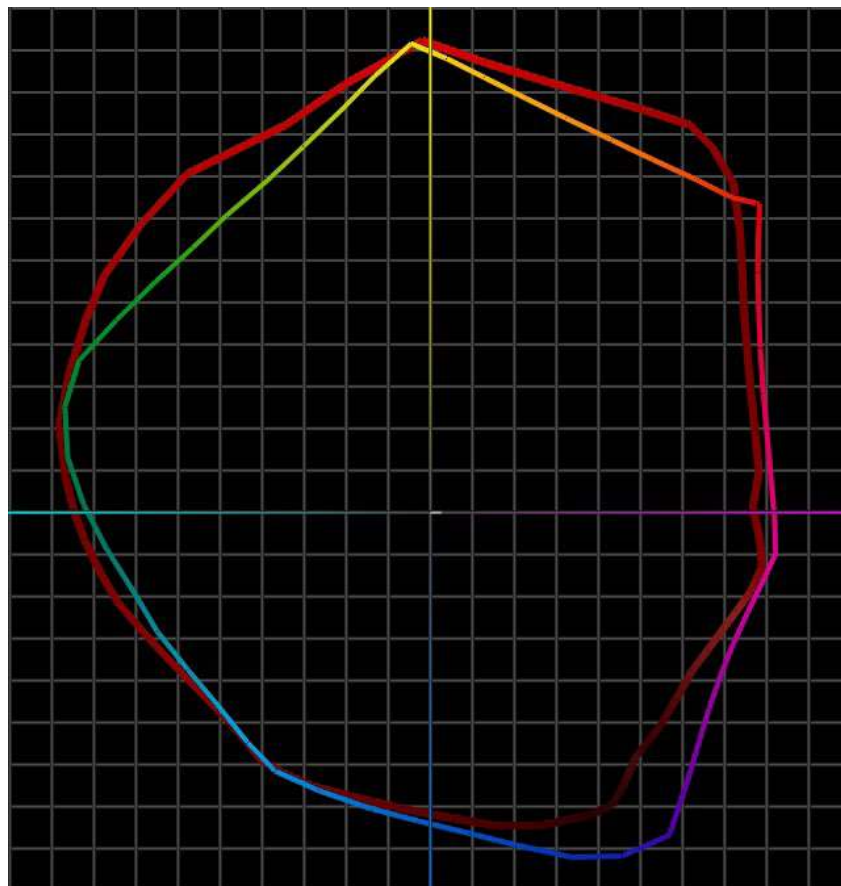
Note: Skin tone and neutral grey consistency measurements are based on nine readings taken from a BLI proprietary PDF test target file comprising four A1-sized solid coverage documents of three skin tones and a neutral grey with the Highest/Max Quality print quality setting selected in the driver and the target printed on the manufacturer's own brand of proofing semi-gloss media. Colour differences across the A1 image were measured comparing eight locations to that of the colour measured at the top left of the page, using an EFI ES1000 colour spectrophotometer and Gretag MacBeth EyeOne Share colour comparison software.

FOGRA 39 DRIFT TEST: comparison of FOGRA39 colour patches before and after ink consumption test.

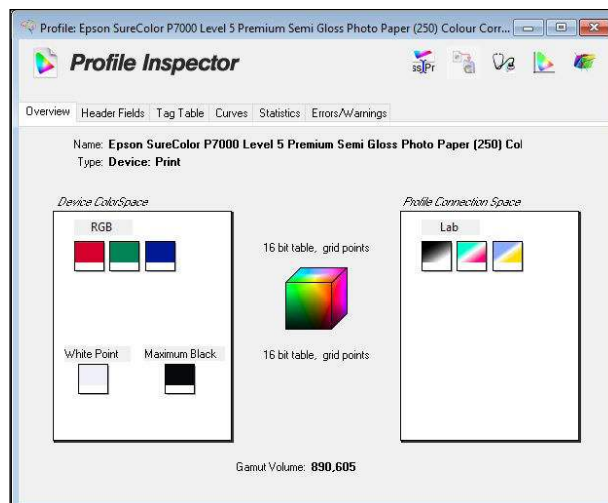
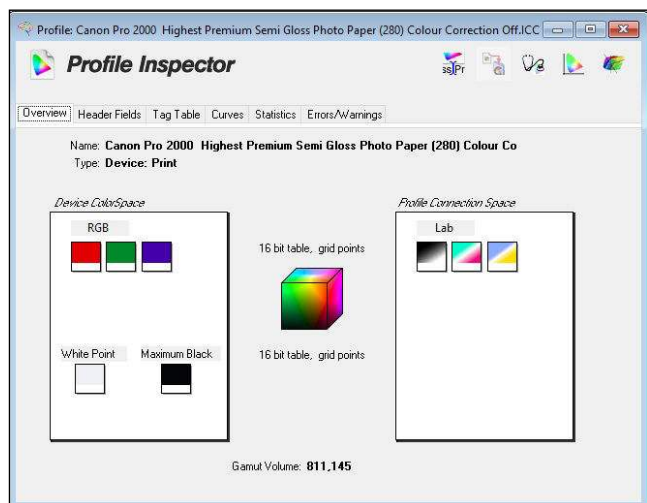
| | Canon imagePROGRAF PRO-2000 | Epson SureColor SC-P7000 |
|---------------|-----------------------------|--------------------------|
| Delta E Drift | 6.0 | 0.8 |

Colour Gamut Comparison

| Media Type/Settings | Canon imagePROGRAF PRO-2000 | Epson SureColor SC-P7000 | Canon % larger/smaller +/- than Epson |
|---------------------------------|-----------------------------|--------------------------|---------------------------------------|
| Photo Paper Highest/Max Quality | 811,145 | 890,605 | -8.9% |



Canon imagePROGRAF PRO-2000 colour gamut (shown chromatically) on Semi-Gloss 280gsm photo paper in Highest settings and with Colour Correction disabled versus Epson SC-P7000 colour gamut (red) on Semi-Gloss 250gsm photo paper in Max Quality Level 5 settings with Colour Adjustment disabled.



Colour gamut profiles for the Canon PRO-2000 (left) and Epson SC-P7000 (right) on Semi-Gloss photo paper in highest quality mode.

Device Feature Set

| | Canon imagePROGRAF PRO-2000 | Advantage | Epson SureColor SC-P7000 |
|--|--|-----------|--|
| Max. print quality | 2400 x 1200 dpi | ✓ | 2880 x 1440 dpi |
| Number of inks | 12 | ✓ | 11 |
| Ink tanks replaceable during operation | Yes | ✓ | No |
| Ink-drop size | Minimum 4 picoliter | ✓ | Minimum 3.5 picoliter (variable) |
| Ink cartridge capacity | 160 ml (Starter), 330 and 700 ml (all colours) | | 150 ml, 350 ml and 700 ml (all colours) |
| Starter ink total capacity | 1,920 ml (160 ml bundled starter ink) | ✓ | 1,210 ml total (110 ml bundled starter ink) |
| Number of nozzles | 18,432 (1,536 per colour) | ✓ | 3,960 (360 per colour) |
| Number of printheads | 1 | | 1 |
| Printhead replacement | User replaceable | ✓ | Service replaceable |
| Line accuracy | +/-0.1% or less | ✓ | +/-0.2% |
| Minimum line width | INA | | INA |
| Minimum print margins | Roll paper: Borderless or 3 mm (all sides); Cut sheet: 3 mm (Top, Side); 20 mm (Bottom) | | Roll paper: Borderless or 3 mm (all sides); Cut sheet: 3 mm (Top, Side); 15 mm (Bottom) |
| Borderless (0 mm) printing | Yes | | Yes |
| Maximum outside diameter of roll paper | 170 mm | ✓ | 150 mm |
| Maximum printable paper roll length | 18 m (varies according to the OS and application) | ✓ | 13.4 m (varies by application, OS and driver/RIP used) |

| | Canon imagePROGRAF PRO-2000 | Advantage | | Epson SureColor SC-P7000 |
|---|--|-----------|---|---|
| Maximum cut-sheet media length | 1.6 m | | | INA |
| Maximum media thickness | Roll/cut: 0.07-0.8 mm | | ✓ | Roll/cut: 0.08-1.5 mm |
| Maximum media width | 24 inches | | | 24 inches |
| Media loading | Front/top | | | Front/top |
| Optional media handling | Roll holder set (supports 2" and 3" media cores) | | | Roll media adapter (supports 2" and 3" media cores) |
| Standard RAM | 3 GB | ✓ | | 1 GB |
| Maximum RAM | 3 GB | ✓ | | 1 GB |
| Hard drive | Standard 320-GB | ✓ | | Optional 320-GB |
| Interface | 10/100Base-TX/1000Base-T Ethernet, USB 2.0 Hi-Speed, Wireless LAN: 802.2.11n, 802.11g, 802.11b | | | 10/100Base-TX/1000Base-T Ethernet, USB 2.0 High Speed, Gigabit Ethernet |
| PDL | SG Raster | | | Epson ESC/P3 |
| Dual-Roll | Optional | ✓ | | No |
| Net weight (unpacked) | 101 kg | | | 101 kg |
| Power consumption when in standby | 1.8 W | ✓ | | 5.4 W |
| Power consumption when active | 88 W | | ✓ | 65 W |
| Acoustic pressure | Operation: 48 dB (A) or less; Standby: 35 dB (A) or less | | ✓ | Operation: 47 dB (A); Standby: INA |
| Acoustic power | Operation: 6.4 Bels or less | ✓ | | Operation: 6.5 B (A) |
| Option to integrate with a spectrophotometer? | No | | ✓ | Yes (Epson SpectroProofer) |

Driver Feature Set

| | Canon imagePROGRAF PRO-2000 | Advantage | | Epson SureColor SC-P7000 |
|---------------------------------------|---|-----------|---|---|
| Speed settings | Up to five, depending on media settings | | | Up to five, depending on media settings |
| Economy mode | Yes (Fast setting) | | | Yes (Level 1 setting) |
| Predefined profiles | 4 (Under Easy Settings) | | ✓ | 5 |
| Overview of profile settings provided | Yes (Favourites only) | | | Yes |
| Media profiles | 51 | ✓ | | 47 |
| IQ optimized for options | Yes | | | Yes |

| | Canon imagePROGRAF PRO-2000 | Advantage | | Epson SureColor SC-P7000 |
|--|--|-----------|---|--|
| Watermark | Yes | ✓ | | No |
| Sharpen text | No | | ✓ | Edge smoothing |
| Thicken fine lines | Yes | ✓ | | No |
| Mirror image | Yes | | | Yes |
| Multi-up printing | Yes, 2 to 16 | ✓ | | Yes, 2 to 4 |
| Poster print mode | Yes (2 by 2) | | ✓ | Yes (4 by 4) |
| Page stamping | Yes (Date, Time, Name, Page Number) | | ✓ | Yes (Date, Time, Document/User/Printer Name, Media Type, Print Quality Level, Print Quality Resolution, Colour Mode, High Speed, Finest Detail, Edge Smoothing, Colour Adjustment and Value, Mode, Colour Density) |
| Image rotation | Yes, auto 180 degrees | | | Yes, auto 180 degrees |
| Option to preview before print | Yes | | | Yes |
| Link to device web server from driver | No (there is a link to Status Monitor) | | | No (there is a link to Status Monitor 3) |
| CMY balance adjustment | Yes | | | Yes |
| Brightness adjustment | Yes | | | Yes |
| Contrast adjustment | Yes | | | Yes |
| Saturation adjustment | No | | ✓ | Yes |
| Advanced colour management options | Yes | | | Yes |
| Enlargement Copy Mode | Yes | | | Yes |
| Free Layout Capability | Yes | ✓ | | No |
| MS Office Plug-in | Yes | | | Yes |
| Adobe Photoshop Plug-in | Yes* | | | Yes** |
| Accounting Capability | Yes | | | Yes |
| Disable automatic cutter | Yes | | | Yes |
| Unidirectional printing selection option | Yes | | | Yes |

* Canon's PRO-2000 supports Canon's Print Studio PRO plug-in which lets users print from industry-standard editing and graphics software such as Adobe Lightroom, Adobe Photoshop and Canon Digital Photo Professional. It also comes bundled with PosterArtist Lite.

** Epson SC-P7000 supports Epson Print Layout, available to download from Epson's website, which is a plug-in for Adobe Lightroom, Adobe Photoshop and Nikon View NX-i.

Ink Consumption

Table 1: Amount of Ink in each Canon imagePROGRAF PRO-2000 Cartridge (in grams)

| | PM | R | C | PGY | MBK | PK | B | CO | GY | Y | M | PC |
|---|-------|-------|-------|-------|-------|-------|-------|-------|-------|-------|-------|---------|
| Weight of cartridge prior to installation | 945.9 | 944.4 | 941.2 | 931.0 | 956.3 | 935.5 | 937.5 | 937.1 | 937.2 | 944.4 | 951.6 | 938.7 |
| Weight of cartridge at end of life | 201.3 | 201.3 | 201.3 | 201.3 | 201.3 | 201.3 | 201.3 | 201.3 | 201.3 | 201.3 | 201.3 | 201.3 |
| Net weight of ink | 744.6 | 743.1 | 739.9 | 729.7 | 755.0 | 734.2 | 736.2 | 735.8 | 735.9 | 743.1 | 750.3 | 737.4 |
| Total ink weight across 12 cartridges | | | | | | | | | | | | 8,885.2 |

Table 2: Amount of Ink in each Epson SureColor SC-P7000 Cartridge (in grams)

| | C | OR | Y | LC | MK | PK | VM | LK | G | LLK | VLM |
|---|---------|---------|---------|---------|---------|---------|---------|---------|---------|---------|---------|
| Weight of cartridge prior to installation | 1,003.8 | 1,005.0 | 1,008.2 | 1,006.2 | 1,014.2 | 1,010.9 | 1,004.7 | 1,010.0 | 1,006.1 | 1,002.9 | 1,006.3 |
| Weight of cartridge at end of life | 351.5 | 351.5 | 351.5 | 351.5 | 351.5 | 351.5 | 351.5 | 351.5 | 351.5 | 351.5 | 351.5 |
| Net weight of ink | 652.3 | 653.5 | 656.7 | 654.7 | 662.7 | 659.4 | 653.2 | 658.5 | 654.6 | 651.4 | 654.8 |
| Total ink weight across 11 cartridges | | | | | | | | | | | 7,211.8 |

Table 3: Ink Used in Three 50-Page Runs of Packaging Proof Test Document (Standard Mode) on the Canon imagePROGRAF PRO-2000 (grams)

| | PM | R | C | PG | MK | PK | B | CO | GY | Y | M | PC |
|---|------|------|------|------|------|------|-----|-----|------|------|------|-------|
| Test Run 1 Net weight of ink used | 13.6 | 13.0 | 14.9 | 10.0 | 7.4 | 39.4 | 7.3 | 5.9 | 36.0 | 12.7 | 13.7 | 6.6 |
| Test Run 2 Net weight of ink used | 8.2 | 5.9 | 4.4 | 5.5 | 4.7 | 29.5 | 3.9 | 4.5 | 23.4 | 8.7 | 4.7 | 3.5 |
| Test Run 3 Net weight of ink used | 10.4 | 10.7 | 10.8 | 13.6 | 11.4 | 33.9 | 9.0 | 8.5 | 26.7 | 9.2 | 9.0 | 8.4 |
| Average amount of ink used across three runs | 10.7 | 9.9 | 10.0 | 9.7 | 7.8 | 34.3 | 6.7 | 6.3 | 28.7 | 10.2 | 9.1 | 6.2 |
| Total average ink weight across 11 cartridges | | | | | | | | | | | | 250.3 |

Table 4: Ink Used in Three 50-Page Runs of Cottage Architectural Plan Test Document (Speed Mode) by the Epson SureColor SC-P7000 (grams)

| | C | OR | Y | LC | MK | PK | VM | LK | G | LLK | VLM |
|---|------|------|------|------|------|------|------|------|------|------|-------|
| Test Run 1 Net weight of ink used | 13.8 | 12.2 | 22.2 | 33.7 | -0.4 | 29.3 | 18.3 | 61.5 | 12.9 | 54.9 | 52.4 |
| Test Run 2 Net weight of ink used | 6.3 | 4.7 | 11.6 | 26.4 | 0.6 | 20.6 | 10.7 | 52.2 | 5.7 | 43.5 | 44.3 |
| Test Run 3 Net weight of ink used | 3.9 | 11.7 | 7.6 | 18.4 | 0.1 | 0.0 | 30.2 | 15.5 | 11.7 | 70.4 | 43.9 |
| Average amount of ink used across three runs | 8.0 | 9.5 | 13.8 | 26.2 | 0.1 | 16.6 | 19.7 | 43.1 | 10.1 | 56.3 | 46.9 |
| Total average ink weight across 11 cartridges | | | | | | | | | | | 250.3 |

Table 5: Ink Used in Three 50-Page Runs of Retail Poster Test Document (Standard mode) on the Canon imagePROGRAF PRO-2000 (grams)

| | PM | R | C | PG | MK | PK | B | CO | GY | Y | M | PC |
|---|------|------|-----|------|------|-----|-----|-----|------|-----|-----|-------|
| Test Run 1 Net weight of ink used | 15.3 | 24.9 | 4.1 | 21.4 | 11.5 | 4.4 | 6.2 | 6.3 | 15.5 | 7.8 | 7.9 | 7.6 |
| Test Run 2 Net weight of ink used | 16.4 | 24.7 | 3.8 | 23.0 | 8.8 | 4.1 | 3.5 | 3.6 | 16.6 | 7.6 | 7.1 | 7.8 |
| Test Run 3 Net weight of ink used | 15.5 | 21.4 | 3.8 | 22.4 | 9.4 | 3.1 | 4.7 | 5.2 | 17.6 | 8.0 | 5.6 | 6.4 |
| Average amount of ink used across three runs | 15.7 | 23.7 | 3.9 | 22.3 | 9.9 | 3.9 | 4.8 | 5.0 | 16.6 | 7.8 | 6.9 | 7.3 |
| Total average ink weight across 12 cartridges | | | | | | | | | | | | 127.8 |

Table 6: Ink Used in Three 50-Page Runs of Retail Poster Test Document (Quality mode) on the Epson SureColor SC-P7000 (grams)

| | C | OR | Y | LC | MK | PK | VM | LK | G | LLK | VLM |
|---|-----|------|------|------|-----|-----|------|------|-----|------|-------|
| Test Run 1 Net weight of ink used | 4.1 | 10.5 | 13.8 | 12.2 | 5.4 | 0.1 | 32.8 | 22.2 | 8.9 | 64.5 | 26.2 |
| Test Run 2 Net weight of ink used | 4.2 | 10.6 | 14.5 | 11.9 | 5.3 | 0.0 | 32.3 | 16.5 | 8.8 | 64.0 | 25.5 |
| Test Run 3 Net weight of ink used | 3.9 | 10.1 | 13.9 | 11.8 | 5.4 | 0.0 | 32.9 | 17.4 | 9.0 | 64.2 | 25.9 |
| Average amount of ink used across three runs | 4.1 | 10.4 | 14.1 | 12.0 | 5.4 | 0.0 | 32.7 | 18.7 | 8.9 | 64.2 | 25.9 |
| Total average ink weight across 11 cartridges | | | | | | | | | | | 196.4 |

Table 7: Ink Used in Three 50-Page Runs of Studio Portrait Test Document (Standard mode) on the Canon imagePROGRAF PRO-2000 (grams)

| | PM | R | C | PG | MK | PK | B | CO | GY | Y | M | PC |
|---|------|-----|-----|------|-----|------|-----|-----|------|-----|-----|-------|
| Test Run 1 Net weight of ink used | 13.0 | 4.5 | 4.1 | 35.7 | 4.1 | 15.8 | 4.3 | 4.1 | 36.7 | 8.8 | 4.3 | 7.3 |
| Test Run 2 Net weight of ink used | 12.8 | 6.1 | 5.1 | 34.3 | 6.4 | 16.6 | 4.8 | 6.2 | 38.3 | 8.9 | 4.7 | 7.0 |
| Test Run 3 Net weight of ink used | 12.6 | 3.3 | 3.8 | 36.7 | 2.9 | 16.1 | 3.1 | 3.2 | 39.7 | 5.4 | 3.9 | 5.5 |
| Average amount of ink used across three runs | 12.8 | 4.6 | 4.3 | 35.6 | 4.5 | 16.2 | 4.1 | 4.5 | 38.2 | 7.7 | 4.3 | 6.6 |
| Total average ink weight across 12 cartridges | | | | | | | | | | | | 143.4 |

Table 8: Ink Used in three 50-page Runs of Studio Portrait Test Document (Speed mode) on the Epson SureColor SC-P7000 (grams)

| | C | OR | Y | LC | MK | PK | VM | LK | G | LLK | VLM |
|---|-----|-----|-----|------|-----|------|-----|------|------|------|-------|
| Test Run 1 Net weight of ink used | 3.7 | 4.0 | 6.2 | 19.0 | 0.0 | 12.2 | 4.5 | 22.8 | 9.4 | 72.3 | 24.0 |
| Test Run 2 Net weight of ink used | 4.0 | 4.5 | 7.4 | 22.8 | 0.0 | 9.0 | 5.2 | 27.5 | 15.2 | 86.8 | 28.9 |
| Test Run 3 Net weight of ink used | 6.7 | 6.0 | 9.0 | 25.7 | 0.0 | 9.1 | 8.1 | 26.4 | 12.7 | 13.3 | 34.6 |
| Average amount of ink used across three runs | 4.8 | 4.8 | 7.5 | 22.5 | 0.0 | 10.1 | 5.9 | 25.6 | 12.4 | 57.5 | 29.2 |
| Total average ink weight across 11 cartridges | | | | | | | | | | | 180.3 |

Ink Consumption Test Methodology Overview

Buyers Lab's ink consumption analysis was conducted using three document types (proof, retail poster and photo). The Packaging Proof document was formatted as a PDF, the Retail Poster as a JPG file and the Studio Portrait was formatted as a TIFF file and all were sized at ISO A1.

The Canon imagePROGRAF PRO-2000 was installed in BLI's lab with the latest level of firmware (as of April 2016) and connected to a Windows 10 workstation using a 1000BaseT TCP/IP connection. The device was left in default configuration throughout testing. The Canon driver was used for all testing and was left in default colour setting unless otherwise specified. The Packaging Proof document was printed on 195 gsm glossy proofing media in Standard mode, the Retail Poster was printed on matte coated media in Standard mode, and the Studio Portrait photo was printed on 280 gsm Semi-gloss Photo media in Standard mode.

The Epson SureColor SC-P7000 was installed in BLI's lab with the latest level of firmware (as of April 2016) and connected to a Windows 10 workstation using a 100BaseT TCP/IP connection. The device was left in default configuration throughout testing. The Epson ESC/P driver was used for all testing and was left in default colour setting unless otherwise specified, with media

selection set to plain paper and the image set to print at actual size. The Packaging Proof document was printed on 205 gsm proofing media in Speed (Level 2) mode, the Retail Poster was printed on matte coated media in Quality (Level 2) mode, and the Studio Portrait phot was printed on 250 gsm Semi-gloss Photo media in Speed (Level 2) mode.

Before installing the ink cartridges, BLI technicians weighed and recorded the weight of each with all packaging removed. At the end of each 50-print test run, the cartridges were weighed again and the resulting weight of ink used for the test run calculated for each colour. To ensure that the sub-tank on the Canon model did not affect results, a procedure was followed to ensure that the sub-tank level was at its maximum before the print run commenced and again after the print run was completed, thereby ensuring that ink replenishment of the sub-tanks was taken into account for each print run.

Canon imagePROGRAF PRO-2000: one cartridge was then run to exhaustion and the weight of the empty cartridge was recorded.

Epson SureColor SC-P7000: one cartridge was then run to exhaustion and the weight of the empty cartridge was recorded.

Test Environment

Testing was conducted in BLI's European test lab, in an atmospherically controlled environment monitored by a 24/7 Dickson Temperature/RH chart recorder, ensuring that typical office conditions were maintained. All paper used in testing was allowed to acclimatize inside the facility for a minimum of 12 hours before being used.

Test Equipment

BLI's dedicated test network in Europe, consisting of Windows 2008 servers, Windows 10 workstations, 10/100/1000BaseTX network switches and CAT5e/6 cabling.

Test Procedures

The test methods and procedures employed by BLI in its lab testing include BLI's proprietary procedures and industry-standard test procedures. In addition to a number of proprietary test documents, BLI uses industry standard files including a BLI test file and an ASTM monochrome test document for evaluating black image quality. In addition to a visual observation, colour print quality and gamut size are evaluated using a profile software tool from Colour Confidence that was read using an EFI ES-1000 colour spectrophotometer and analysed using Chromix ColorThink Pro 3.0 software. Density of black and colour output was measured using an X-Rite 508 densitometer.

About Buyers Laboratory Inc.

Buyers Laboratory LLC (BLI) is the world's leading independent provider of analytical information and services to the digital imaging and document management industry. For more than 50 years, buyers have relied on BLI to help them differentiate products' strengths and weaknesses and make the best purchasing decisions, while industry sales, marketing and product professionals have turned to BLI for insightful competitive intelligence and valued guidance on product development, competitive positioning and sales channel and marketing support. Using BLI's web-based bliQ and Solutions Center services, 40,000 professionals worldwide create extensive side-by-side comparisons of hardware and software solutions for more than 15,000 products globally, including comprehensive specifications and the performance results and ratings from BLI's unparalleled Lab, Solutions and Environmental Test Reports, the result of months of hands-on evaluation in its US and UK labs. The services, also available via mobile devices, include a comprehensive library of BLI's test reports, an image gallery, hard to find manufacturers' literature and valuable tools for configuring products, calculating total cost of ownership (TCO) and annual power usage. BLI also offers consulting and private, for-hire testing services that help manufacturers develop and market better products and consumables.

For more information on Buyers Laboratory, please call David Sweetnam on +44(0) 118 977 2000, visit www.buyerslab.com, or email david.sweetnam@buyerslab.com.